



# DEKTITE & INFILL STRIPS



*Simply the Best*

**ROOFING & PROFILES (FIJI) LTD.**

**BUILD WITH CONFIDENCE**

**ROOFING & SHEETMETAL MANUFACTURERS**

P.O. BOX 9, BA, FIJI ISLANDS

PHONE: (679) 667 4633 (OFF), (679) 667 3764 (FAC)

FAX: (679) 667 0184 (OFF), (679) 667 3674 (FAC)

Email: [info@rcmanubhai.com.fj](mailto:info@rcmanubhai.com.fj) [www.rcmanubhai.com.fj](http://www.rcmanubhai.com.fj)

**Build With Confidence**





# It's so easy with a **Dektite® Retrofit™**



## **When it has to flash around, not over**

When it's not possible to slide a flashing over the top of a pipe or vent, you need a Dektite® Retrofit™. Great for repairs on existing installations.

### **CHECK THE BENEFITS!**



- ✓ **Difficult installations are a breeze!**  
*Wraps around existing or difficult to access pipes*
- ✓ **Snaps together in seconds**  
*The built-in crimp means no loose clips or rivets!*
- ✓ **Grips tight and stays tight**  
*Made from DEKS' quality polymer compound*
- ✓ **Our base makes easy work**  
*The supple aluminium base conforms like magic!*
- ✓ **Twenty year warranty!**  
*Just fit it and forget it - we've got you covered*

### **The Dektite® Retrofit™ Soaker™**

Where there's difficult access  
and damming is a risk, use a  
Dektite® Retrofit™ Soaker™.  
(Code RFS4)



See over for  
installation  
instructions and  
specifications!



**benchmark**  
IN QUALITY  
AS/NZS ISO 9002

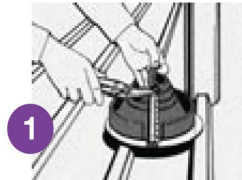


**Australian made ~ Australian designed**



# Dektite® Retrofit™

## Installation Instructions



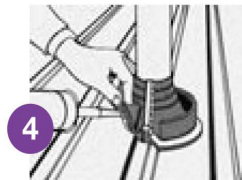
**1** Trim cone to suit pipe size using sharp tin snips.



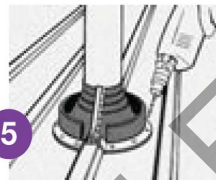
**2** With clip in downstream position, wrap top of cone around pipe and engage metal teeth in opposing pockets starting at the top.



**3** To assist locating clip into pocket, place hand behind seam, fasten clip with pliers or multigrips, working from top to base. Do not over crimp.



**4** Apply sealant to underside of Dektite® base and shape to roof by hand.



**5** Fasten flashing down and secure clip by placing a fastener either side of clip first.



**6** Apply sealant to top of crimp closure and any other potential leak areas.

## Easy Selection Guide

PIPE <small>mm</small>	PITCH
0 - 70	0 - 40°
50 - 155	0 - 40°
150 - 255	0 - 40°
240 - 375	0 - 40°

\*E.P.D.M. withstands temperatures from -50°C to 115°C, & up to 150°C intermittently

### EPDM - Perfect for approved flues!

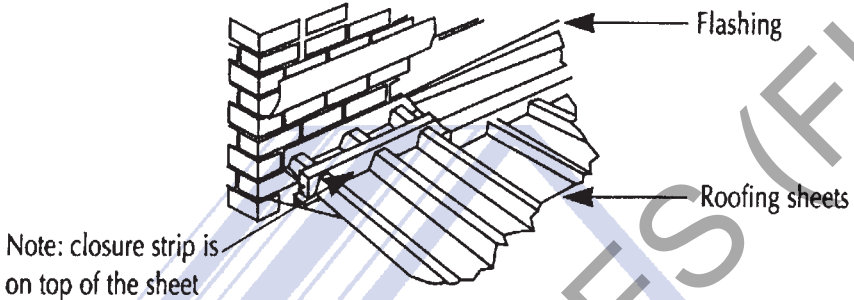
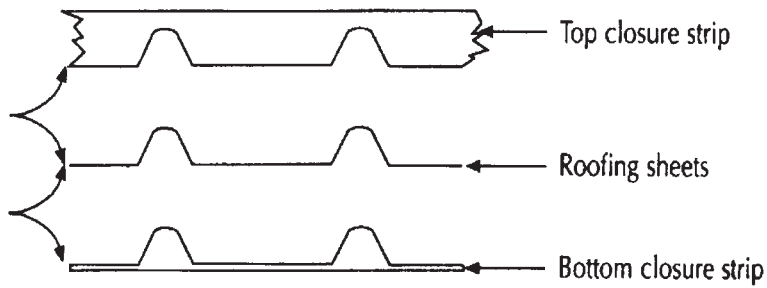
Dektite® EPDM polymer flashings have been officially tested by the Coal Corporation of Victoria, Australia and conform to all Australian and UK Standards on approved flue systems. Under no circumstances should any polymer flashing be installed on a non approved flue or an 'active' combustion heater flue.



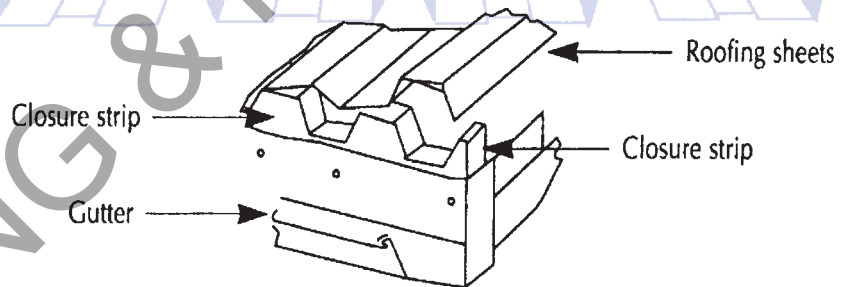


**Roof infill strips**

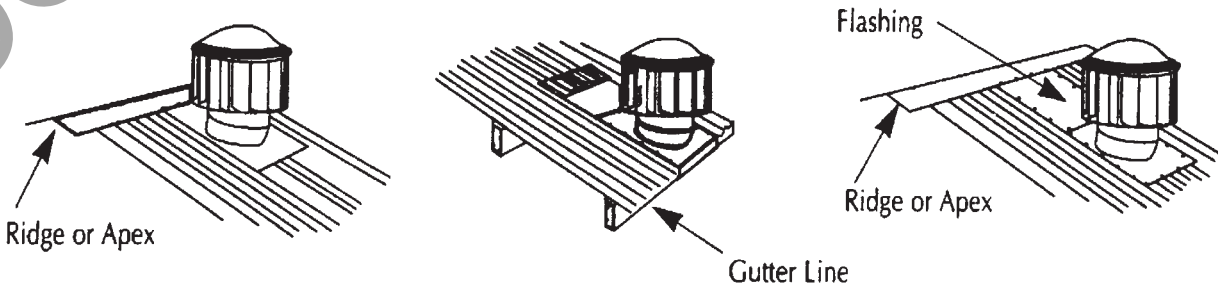
Matching foam closure strip for ridge flashing or parapet flashing.  
 Matching foam closure strip for dust proofing or bird proofing.



**Custom Orb**



**Roof ventilators**



**Dektite pipe flashing**

